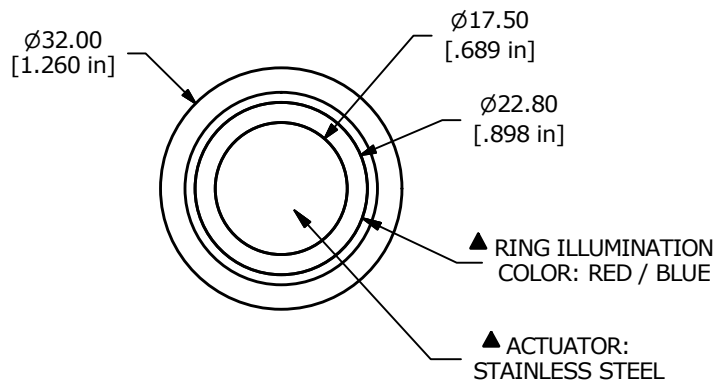


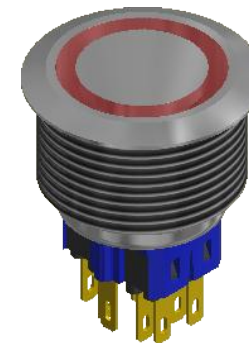
PANEL CUTOUT  
MAX. PANEL THICKNESS 10mm



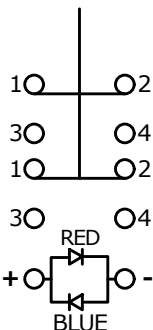
▲ RING ILLUMINATION  
COLOR: RED / BLUE

▲ ACTUATOR:  
STAINLESS STEEL

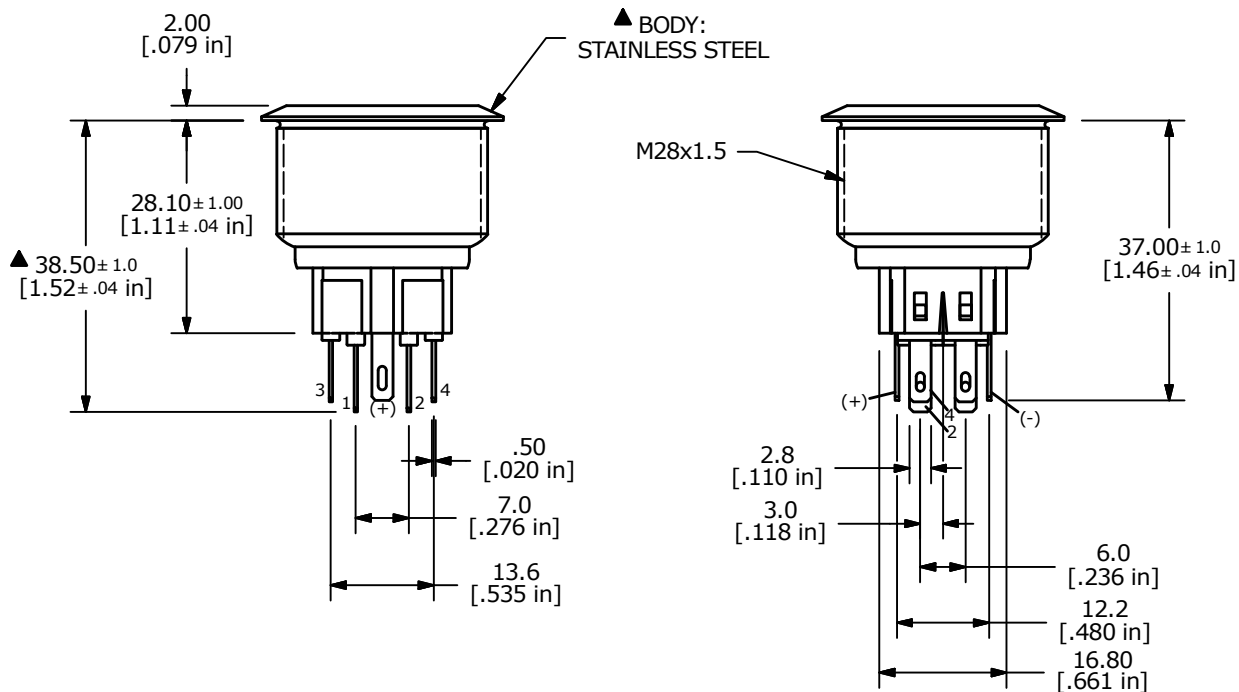
▲ BODY:  
STAINLESS STEEL



SWITCH FUNCTION	
POS. 1	POS. 2
1-2	3-4



▲ DPDT OFF-(ON) / ON-(OFF)  
CONTACT CONFIGURATION  
( ) DENOTES MOMENTARY



NOTE:

1. ALL DIMENSIONS IN MM [INCH]
2. GENERAL TOLERANCE: X.X = ± 0.4  
X.XX = ± 0.25
3. TERMINAL NOS. FOR REF. ONLY
4. RATING: 2A @ 48VDC
5. CONTACT RESISTANCE: 50mΩ MAX. @ 1A 12VDC
6. INSULATION RESISTANCE: 1,000MΩ @ 500VDC
7. DIELECTRIC STRENGTH: 2,000VAC MIN. FOR 1 MINUTE
8. ELECTRICAL LIFE: 50,000 CYCLES
9. OPERATING TEMPERATURE: -20°C TO 55°C
10. INGRESS PROTECTION: IP66
11. ▲ DENOTES CRITICAL PARAMETER
- ▲ 12. SUPPLIED HARDWARE: O-RING AND HEXNUT
- ▲ 13. ILLUMINATION COLOR: RED (FORWARD), BLUE (REVERSE)
- ▲ 14. ILLUMINATION VOLTAGE: 1.8V FORWARD, 2.8V REVERSE



B	23838	UPDATED RATING TO IP66	4/8/19	MJR
A	21909	RELEASE FOR PRODUCTION	7/10/15	MW
REV	PCR NO	DESCRIPTION	DATE	BY

TITLE PV9F2V0SS-3H1				
SCALE 1:1	DATE 7/10/2015	DR MW	DWG 52-PV9F2V0SS3H1	REV B

THE INFORMATION CONTAINED IN THIS DOCUMENT IS PROPRIETARY TO E-SWITCH AND IS NOT TO BE COPIED OR TRANSFERRED